

Nottinghamshire  
County Council

# Tackling Health Inequalities & The Framework Community Strategy for Nottinghamshire

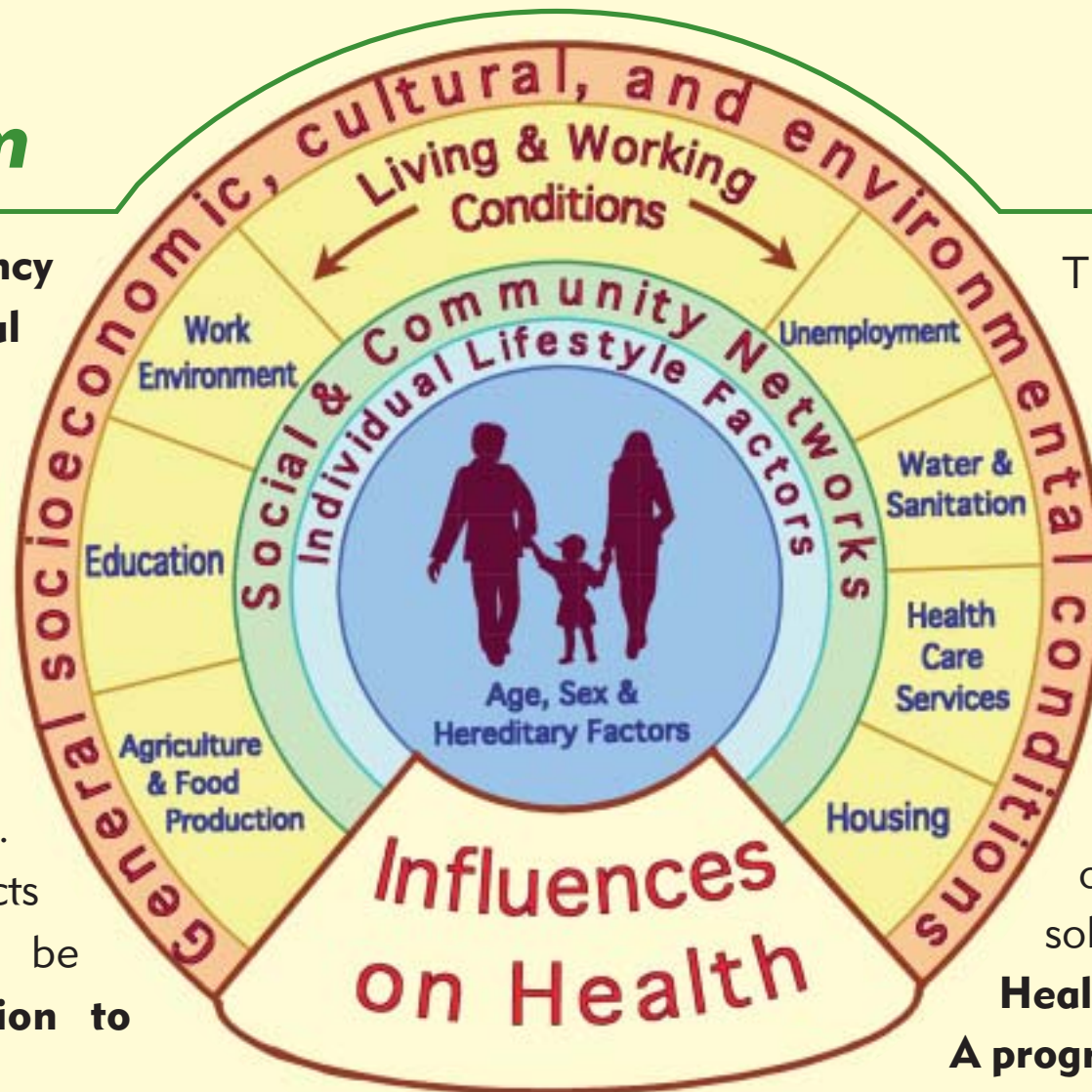
## The Problem

Health & life expectancy are still linked to **social circumstances** and **childhood poverty**. Generally, the more **disadvantaged** people have the **worse health**, the **poorer quality of life** and an **earlier death**. Unfortunately, the effects of disadvantage can be passed from **generation to generation**.

For some communities this is **getting worse**. In 1970 the **poorest** men of working age had **twice** the **death rate** of the most **affluent**. In the 1990's, this gap widened to **three times** the **death rate** of the **better off**.

There is also a **geographical divide** in life expectancy at birth. In some parts of the North **boys** born today will **die ten years earlier** than in the South. For **girls** the difference is **seven years**.

These **differences in health** are, in many cases, both **avoidable** and **unjust**. They result from the consequences of **differences in opportunity**, in **access** to services and in **material resources**, as well as **lifestyle choices** that are **constrained by disadvantage**. Nottinghamshire's **Community Strategy** can be a **vehicle for change** to **reduce differences** in, not just increase, the **well-being** of the people of Nottinghamshire



## The Solution

These problems can be **overcome**. Health inequalities can be **reduced** if the **wider determinants of health** are **tackled**. The diagram in the centre shows the factors that influence health. The **Health Services** are just one **small part** of the solution.

**Health Inequalities:**  
A programme for **Action** outlines a **strategy** to:

- **Reduce poverty**
- **Improve educational attainment**
- **Tackle worklessness**
- **Upgrade housing stocks**
- **Combat homelessness**
- **Invest in disadvantaged neighbourhoods**

A **Cross Cutting Review** has pulled together strands of work in all government departments. **Public Service Agreement** targets have been set. These will be assessed fully in the 2005 **Comprehensive Performance Assessment**. The **Local Government Association** and **Health Development Agency** are jointly involved in a programme to support **Local Authorities** in meeting the **challenges** in partnership with others.

# Implementation

## Actions for Local Authorities working with PCTs and Regional Partners: Viewed through our own community strategy framework

### A Safe County

- Ensure all housing meets the decent housing standard by 2010.
- Ensure that vulnerable households in the private sector have been helped to make their homes decent by 2005/06.
- Introduce a housing health & safety rating system to enable LA action, particularly of multiple occupation housing.
- Create better and safer local environments.
- Develop consistent transport and land-use planning policies so people can get to work and key services, and take more exercise.

### A Clean & Green County

- Underline the links between the quality of local environments and people's physical & emotional wellbeing.
- Take action on poorly insulated homes.
- Improve access to local services by improving transport & the location of services.

### The County's Future

- Involve young people in designing and evaluating the impact of public sector services.
- Engage communities in the planning and provision of services. Promote community networks to increase participation, taking account of learning from Sure Start local programmes.
- Develop sports facilities through the New Opportunities PE and Sports programme and roll out the school sport coordinator infrastructure.

### Learning & Earning

- Reduce gap in educational achievement for young people from disadvantaged backgrounds.
- Focus the Health Schools Programme on disadvantaged areas and strengthen the teaching of personal, social and health education.
- Act locally to reduce truancy.
- Use culture and creativity to increase engagement and improve school attendance.
- Greater use of school facilities to deliver services.
- Improve the job prospects of black and ethnic minority groups with JobCentre Plus and Connexions.

### A Healthy & Caring County

- Develop Clear Guidance on arrangements for homeless families and their children.
- Eliminate the use of B&B accommodation for homeless families with children.
- Reduce illness and death from accidental injury especially for children in low income families and vulnerable old people.
- Reform patient transport services and hospital travel costs scheme.
- Develop multi-disciplinary family support teams, working with Sure Start local programmes, PCTs and voluntary organisations.
- Implement the recommendations of the Valuing People white paper to tackle health inequalities for people with learning disabilities.

## Targets

By 2010 to reduce inequalities in health outcomes by 10% as measured by infant mortality

Starting with children under one year, by 2010 to reduce by at least 10% the gap in mortality between routine and manual groups and the population as a whole

Starting with local authorities, by 2010 to reduce by at least 10% the gap between the fifth of areas with the lowest life expectancy at birth and the population as a whole



Nottinghamshire  
County Council

#### Contacting us

email [cathy.harvey@nottscc.gov.uk](mailto:cathy.harvey@nottscc.gov.uk)

phone 0115 977 3415

fax 0115 977 4327

post Regeneration Division, Culture & Community Department,  
County Hall, West Bridgford, Nottingham NG2 7QP

internet [www.nottinghamshire.gov.uk](http://www.nottinghamshire.gov.uk)