



Nottinghamshire
County Council

Spring 2024

CountyLife

Investing in new schools to benefit future generations



Artist impression of the planned new school in Gateford

INSIDE:

Could you make a difference?
PAGE 3

What your council does for you
PAGES 4-9

How your Council Tax is spent
PAGES 10-11

Dates for your diary
PAGES 12

Councillor Keith Girling, Council Leader Ben Bradley MP and Councillor Tracey Taylor at the site of the planned new primary school in Gateford, Worksop. Read more on page 4



Welcome

Nottinghamshire County Council Leader,
Councillor Ben Bradley MP

This year is shaping up to be a ground-breaking one thanks to more decision-making and investment for the region via the new East Midlands Combined County Authority (EMCCA).

Done well, devolution will result in better life outcomes for residents; more investment in skills and jobs, and more control to deliver improved public transport – and will give us a platform and powers to bring lasting benefits and change lives for generations.

The EMCCA will be in place later this spring and led by a new regional Mayor, who will be elected in May, which means there will be fundamental changes in how public services are delivered in Nottinghamshire.

However, the County Council will continue to provide key, frontline services as we have always done. In fact, despite the financial pressures, our administration has a plan to both balance the books and support residents with the best possible local services.

This includes improving the way in which we provide early help and advice to our most vulnerable residents and, as a council, we are determined to enhance the experiences of our children, young people, and families.

We are also committed to creating and delivering better opportunities and services to disadvantaged communities and tackling the challenges around Special Educational Needs and Disabilities.

Our school building improvement work continues this year, making sure Nottinghamshire's young people have the right type of learning environment where they can thrive and succeed.

Work is also gathering pace on the council's move to our new corporate base near Hucknall, forming part of a wider investment programme in the area.

The new office will bring long-term savings for the taxpayer as we reduce the number of office buildings from 17 to nine.

Work will get underway this year on a major scheme to improve the A614 and A6097 roads, a project which is vitally important to boost local and regional connectivity and support growth and investment in Nottinghamshire.

We're proud to be continuing to deliver major capital investments like this when so many other areas have scrapped or cut back on key projects.

I hope you enjoy reading this year's County Life, telling the story of how we are using your money to deliver key services, creating opportunities, and supporting Nottinghamshire residents.

We need you to care



Interested in helping make a real difference to the lives of others?

There are two ways you could make an impact, as we're looking for **foster carers** for local children and **carers** to support those who have been discharged from hospital to live more independent lives.



foster NOW

We're encouraging Olivia to flourish

our goal: a safe, loving home for every local child



Foster for Nottinghamshire
nottinghamshire.gov.uk/FosterNow
 tel: 0115 804 4440

Could YOU support others to live their best life?

Reablement.Recruitment
@nottsc.gov.uk



We need you to care

Communities



Boosting facilities for young people

A new £3.2m youth and community centre is coming to Mansfield.

We have also invested more than £245,000 on the replacement and refurbishment of purpose-built mobile youth centres in the county, a programme which forms part of our ambition to give young people a safe place to go, interesting things to do and to meet up with friends.

Providing **safe spaces**
 fun and **engaging** things to do



Millside Spencer Academy, East Leake: Councillors, school principal and pupils celebrate the opening of one of the many new school buildings in Nottinghamshire

Investing in our schools

Our commitment to investing in new schools and making sure Nottinghamshire's young people have the right learning environment to thrive and succeed will continue this year. This includes:

- Due to open Autumn 2024, a new primary school, Whipman Woods Flying High Academy, is set to serve a new housing development on the northern fringes of Worksop. It will eventually have the capacity for **315 primary places plus a 26-place nursery** to meet the needs of local families. (Artist impression above).
- Investing **£9.2m** in school infrastructure improvements, which will benefit 20 primary and infant schools across the county during 2024/25.
- Providing more support to help reduce the time children wait to get the education health and care assessments and early intervention support they need.

Work will also progress this year on a 160-place new school for children with special educational needs and disabilities in the Ravensdale area of Mansfield.

Support for young people's mental health

NottAlone is a dedicated website providing information and support for young people's mental health across Nottingham City and Nottinghamshire County.

If you are aged under 25, are a parent or carer, or a professional who works with and supports young people, you can find information, advice and where to go to get help in Nottinghamshire.

NottAlone.org.uk

NottAlone

Supporting young people with mental health concerns.

nottalone.org.uk



Nottinghamshire Family Hub Network supporting children and families



The council is working with partners to create Family Hub networks across Nottinghamshire. These hubs will offer support from pregnancy, through the child's early years, later childhood and into young adulthood. They will be a one stop shop for information and advice for families. We have developed the first Family Hub in Retford and are currently working with local families to create more Family Hub networks in the next year.

Investing in community groups

Our Local Communities Fund continues to support the essential work of voluntary groups and organisations. This investment helps create a better place to live as well as building community resilience.

In 2023/4

More than **£2.1m** invested in community groups

More than **390** projects awarded grants

Local Communities Fund



NEW job support scheme is now available

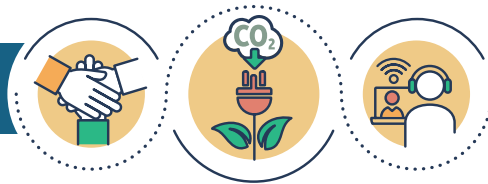
A new job support scheme is now available for people with physical and mental health challenges.

Our employment specialists can offer free advice and guidance to help find a new job, as well as in-work support for both the employee and the employer.

Self-referrals are now being taken workingwell-eastmidlands.gov.uk



Opportunities



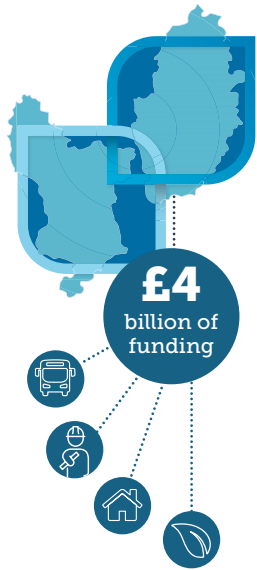
Devolution set to bring new powers and funding

Nottinghamshire residents will get the chance to vote for the first-ever East Midlands Mayor on 2 May 2024.

Together with Derbyshire County Council, Derby City Council and Nottingham City Council, we approved plans to create the East Midlands Combined County Authority (EMCCA) in December.

EMCCA is set to bring in around £4 billion of funding for the region, alongside devolved powers for transport, skills and adult education, housing, the environment, and economic development.

Devolution will give the East Midlands a platform and powers to bring lasting benefits and change lives for generations.



Helping communities be better connected



Faster internet speeds are set to benefit rural communities who can sometimes struggle with broadband connectivity. This has been made possible thanks to new funds from the devolution deal.

Dozens of public buildings such as schools, libraries and community centres across the county will benefit from government investment.

This will allow whole classrooms to be online at once with no interruptions or help those without home internet access to have more options when it comes to finding work, training or skills opportunities online.



Eligible sites are due to be better connected by the end of March 2026

New technology set to benefit future generations



The Nottinghamshire-based, cutting edge scheme to commercialise fusion energy is taking shape.

In what could be a world-first, a prototype, known as the STEP fusion plant, will be built at the site of the former coal-fired power station at West Burton A, near Retford, bringing billions of pounds of investment.

Experts overseeing the project from the UK Atomic Energy Authority have now opened their first fixed offices on the site and recruited their first intake of staff from the local area. A skills apprenticeship hub is also planned.

Erin Swannick, 5, (pictured) has a strong family connection to the site, with her mum, Rebecca, grandad and great

grandad all working at West Burton over the years.

Erin will be around 21 when the ground-breaking plant to create clean, limitless energy is set to open, bringing skills and thousands of jobs to benefit Erin's generation.

Copying the processes that power the sun, fusion offers a safe, virtually limitless source of clean electricity which will help bring long-term, uninterrupted availability of energy.

Help develop the vision for the West Burton site by providing feedback at step.ukaea.uk where you can also sign up for a newsletter to find out about the next community event near you.



Erin's mum and site security guard, Rebecca Swannick, opening the new site office.

Investment



Pushing ahead with the A614 road scheme

Work is due to start this summer on upgrades to Ollerton roundabout, White Post roundabout, Warren Hill junction, Lowdham roundabout and Kirk Hill junction (subject to government approval) as part of the A614 major road scheme.

The multi-million pound scheme, funded by the Department for Transport (DFT) and the council, is a key element of our strategy to improve local and regional connectivity and support growth and investment in Nottinghamshire.

Improving access to training and jobs and helping businesses to move goods more efficiently is central to making the county's economy stronger.

Residents will have the opportunity to view the latest plans and find out more at summer events where they can meet contractors and can sign up for email updates straight to their inbox at

nottinghamshire.gov.uk/emailme

Improvements to Mickledale Lane junction will be progressed separately and funded by the council at a cost of approximately £5m.



Councillor Neil Clarke MBE outside the University of Nottingham School of Agriculture, Sutton Bonington

Students from **Vision West Notts College** have been taking advantage of a new travel scheme that helps them to use local bus services across Mansfield, Ashfield and beyond. Developed in partnership with the college and local bus operators, **more than 250,000 trips** have already been made on cleaner, greener buses, with a significant number of students using their new bus passes to travel in the evenings and at weekends.

Improving our bus services



We're investing more than **£5m** in local bus services to deliver a better and more joined up local transport system.

We financially support **80 local bus services** and a further 12 at-risk services continue to be secured through **£1.3m grant funding per year**. This helps to fill gaps in the bus network and connect communities.

Our **Nottsbus on Demand** service continues to expand. Four new zones covering areas of Rushcliffe, Gedling, Ashfield, Broxtowe and Newark will be launched over the next 18 months.

Continuing to invest in our roads

Storms, floods and severe weather have increased damage to our highways this winter, and stretched our capacity.

Emergency repairs are essential as we work to keep all road users safe, but we know that people want permanent repairs so we aim to do this wherever we can.

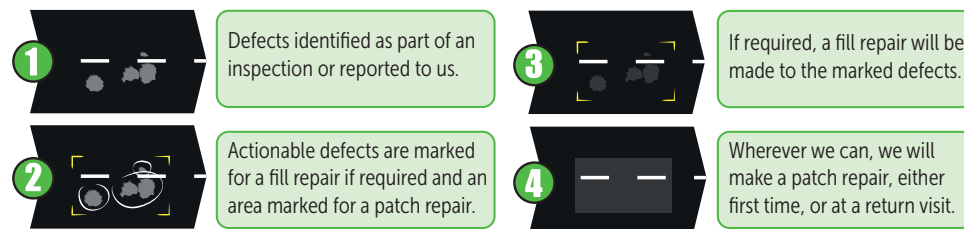
We have helped secure major, long-term transport and highways funds for the East Midlands, worth almost £2 billion over the next 12 years. These new funds will be managed by a new regional mayor who will be responsible for delivering this

significant investment across Nottinghamshire and the wider East Midlands Combined County Authority area.

Thanks to our successful lobbying, we've also recently secured additional funding from Government that will enable us to invest an additional £4m on local road repairs in 2024, on top of our existing £55m annual spend.

Please report potholes through our website or the **MyNOTTS app**.
(More details about our app on the back page).

The 4 stages of our pothole repairs



To view all our latest repairs, including large scale patch repairs, visit nottshighways.co.uk

NOTTSHIGHWAYS
IMPROVING YOUR ROADS

Spending less on energy bills, to save you money

Plans continue to help save taxpayers' money in the long-term by having fewer, more efficient council buildings and spending less on energy bills.

The new, all-electric corporate base near Hucknall, which will also be home to front-line services, is currently being built and due to open early 2025.

It will pave the way for a new community on the site. This will help to bring more jobs, skills and investment into the area.



Pictured centre are Council Leader Ben Bradley MP and Councillor Bruce Laughton at the site

Your Council Tax



The 2024/25 budget sees an increase in overall spending of over £47m, with more than £160m being invested in capital projects across Nottinghamshire.

Good, sound financial decisions, and the hard work we've undertaken with partners and communities in recent years, puts us in a better position than most councils to balance our budgets and transition our services to something more sustainable going forward.

Pressures on local government services, in particular, the cost of delivering care services has been well documented, but we're proud that this council will continue to invest in key, core services to build resilience and independence, leading to better outcomes for everyone.

We're focussed on protecting the early help and prevention services that support the most vulnerable individuals and communities across the county.

We're investing in our children's future, with £48m to ensure that there are sufficient school places and a further £22m invested to support the provision of new school places for children with special educational needs and disabilities.

Over the next few years, £142m will be invested in highways including road repairs, road safety, and improvements to bus services.

This is a budget that invests, builds community resilience, sustainable services and looks at economic growth and regeneration for future generations. It helps to make Nottinghamshire a place that people are proud to call home.

Due to the rise in the national minimum wage, social care staff costs have increased by **£5m**

Costs for educational health care plan assessments (EHCPs) **£61m**

Children in care: fostering agency costs **£17.4m**

The cost of providing local public services in 2024

2.8%

INCREASE IN COUNCIL TAX

+

2%

ADULT SOCIAL CARE PRECEPT

=

£1.13

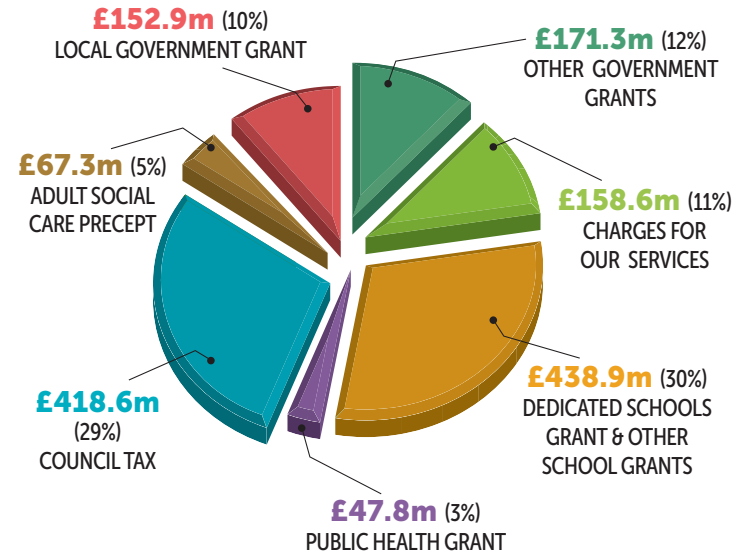
WEEKLY INCREASE FOR MOST COUNTY HOUSEHOLDS

→

£28m

EXTRA MONEY TO SUPPORT LOCAL PUBLIC SERVICES

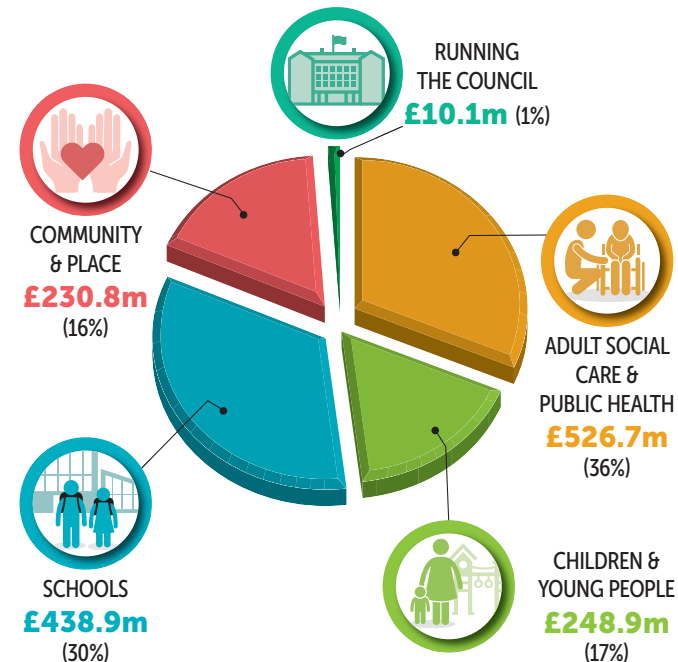
Where the Council's budget comes from



YOUR COUNCIL TAX PAYMENT 2024/25	
Band A	£1,028.44
Band B	£1,199.85
Band C	£1,371.25
Band D	£1,542.66
Band E	£1,885.47
Band F	£2,228.29
Band G	£2,571.10
Band H	£3,085.32

The actual amount you pay will depend on your individual circumstances (whether you receive single person discount, student or disability exemptions etc) and additional amounts for your District Council, Fire and Police.

How the Council's budget is spent



In addition to the increase in Council Tax, the County Council has also approved an additional Government precept solely for adult social care of 2%. The impact of this is:

ADULT SOCIAL CARE PRECEPT	
Band A	£176.28
Band B	£205.66
Band C	£235.04
Band D	£264.42
Band E	£323.18
Band F	£381.94
Band G	£440.70
Band H	£528.84

Dates for your diary

Here are a few of our event highlights for 2024

APR

Opening of a new zip trek attraction

Adventures

at Mill Waters Parks and Reservoir, Sutton in Ashfield



MAY

11

Nottinghamshire County Show at Newark Showground



JUN

6

D·DAY80

Nottinghamshire to commemorate the 80th anniversary of the D-Day landings



AUG

16-18

Holme Pierrepont Country Park set to host the family-friendly Gloworm Festival

glowormfestival.co.uk



AUG

The annual Robin Hood Festival at Sherwood Forest will be held throughout August

visitsherwood.co.uk



AUG

25

Nottinghamshire Day and celebration event at Sherwood Forest

Follow #Nottsdays



Find out more and access many of the most popular council services whilst on the move with our MyNotts app.



SCAN ME

Look out for more details at nottinghamshire.gov.uk

