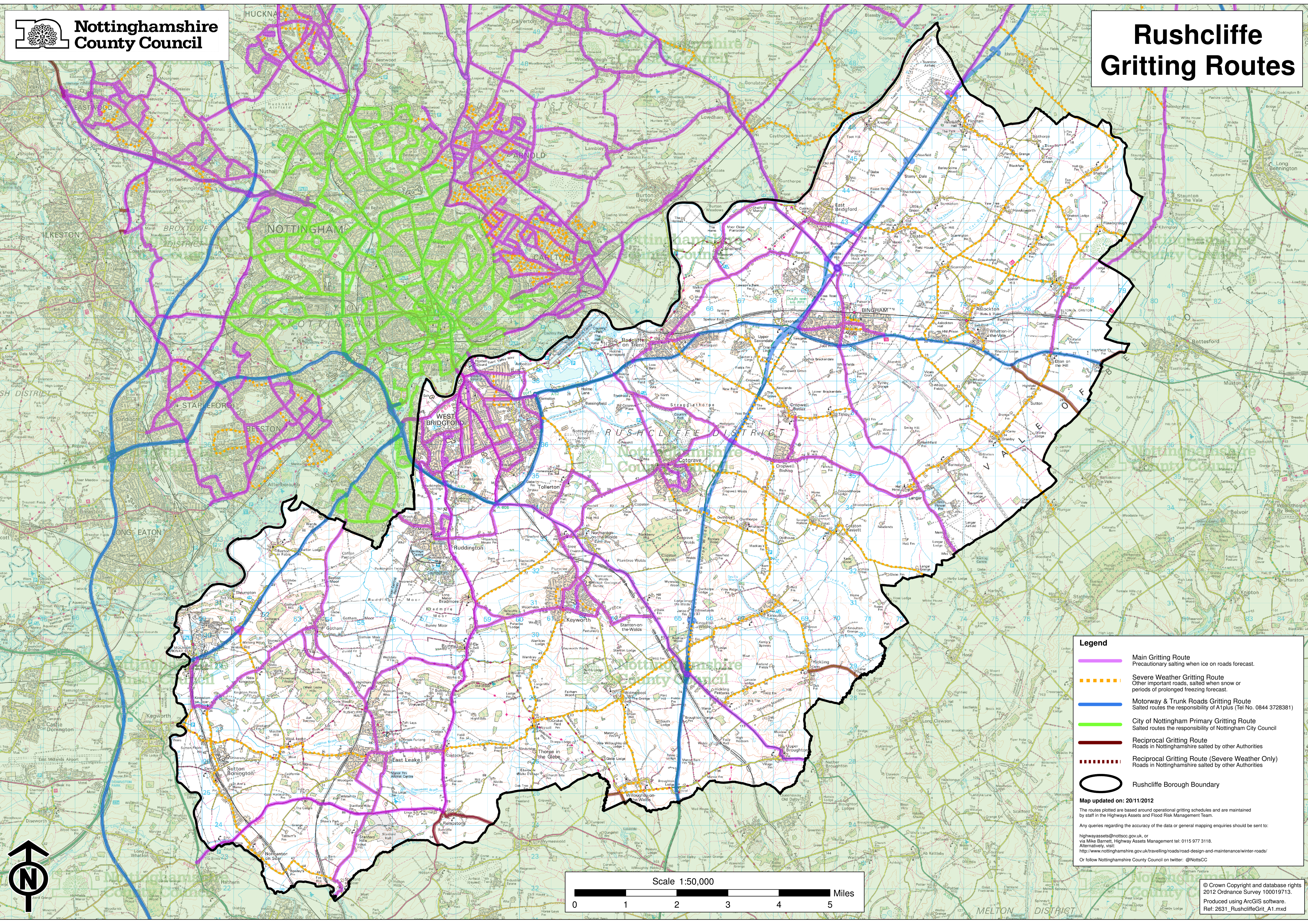


# Rushcliffe Gritting Routes



**Legend**

- Main Gritting Route  
Precautionary salting when ice on roads forecast.
- - - Severe Weather Gritting Route  
Other important roads, salted when snow or periods of prolonged freezing forecast.
- Motorway & Trunk Roads Gritting Route  
Salted routes the responsibility of A1plus (Tel No. 0844 3728381)
- City of Nottingham Primary Gritting Route  
Salted routes the responsibility of Nottingham City Council
- Reciprocal Gritting Route  
Roads in Nottinghamshire salted by other Authorities
- - - Reciprocal Gritting Route (Severe Weather Only)  
Roads in Nottinghamshire salted by other Authorities
- Rushcliffe Borough Boundary

**Map updated on: 20/11/2012**  
 The routes plotted are based around operational gritting schedules and are maintained by staff in the Highways Assets and Flood Risk Management Team.  
 Any queries regarding the accuracy of the data or general mapping enquiries should be sent to:  
[highwaysassets@notscc.gov.uk](mailto:highwaysassets@notscc.gov.uk) or  
 via Ming Barnett, Highway Assets Management tel: 0115 977 3118.  
 Alternatively, visit:  
<http://www.nottinghamshire.gov.uk/travelling/roads/road-design-and-maintenance/winter-roads/>  
 Or follow Nottinghamshire County Council on twitter: @NottsCC

